

BERNINA
Q Series



BERNINA RULER PANEL INSTRUCTION GUIDE

made to create **BERNINA**

NOTE: When quilting on the Q Series with Frame, flip up the handle on your non-dominant side to enable a more secure grip on the rulers.

SUPPLIES

- BERNINA Ruler Panel by Amanda Murphy
- 100% Cotton backing fabric (at least 2" larger on each side for sit-down quilting and 6" larger on each side for quilting on the frame)
- Batting (same size as backing fabric)
- White machine quilting thread
- Snips
- 6" X 24" rotary cutting ruler
- Fabric marking pen or pencil
- Pins for loading frame (Q Series with Frame)
- Safety Pins or Basting Spray (Domestic and Q 20)
- TrueCut TrueGrips Non-slip Ruler Grips (optional)
- Supreme Slider (optional for domestic quilting)
- BERNINA Ruler Foot #96 (Q Series)
- BERNINA Adjustable Ruler Foot #72 (BERNINA Domestic Machines)
- BERNINA Ruler Starter Kit for the Frame and Sit-down
- BERNINA Ruler Base (frame only)
- One BERNINA Q Series bobbin

The BERNINA Rulers used in this guide are listed below:

- Straight Line Tool
- Starter Tool (optional)
- Mini 4-in-1 Tool
- 1-1/2" Circle
- 2-1/2" Circle
- 3-1/2" Circle
- 2" X 4" Oval
- 4" X 8" Oval
- Squiggle Tool

The following steps will walk you through quilting the BERNINA Ruler Panel, designed by Amanda Murphy of Amanda Murphy Design, and are designed to work on both frame and sit-down models. You may need to make adjustments based on the rulers you have available. Each step is in red with the ruler type in red beneath each step description. If you are left handed simply quilt in the opposite direction indicated. Please see page 9 for the entire panel and each section.

QUILTING INSTRUCTIONS

STEP 1: BASTING

STRAIGHT LINE (OR STARTER) TOOL

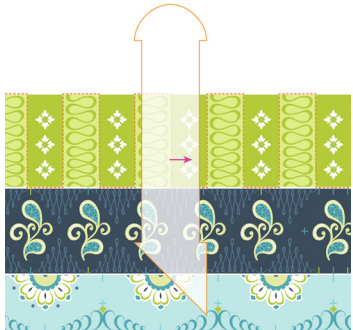
- For the Q 24 with Frame, baste along the edges and the top of quilt top to secure it, making sure it is parallel to leveling bar.
- For the Q 20 Table Model and domestic, pin baste or spray baste the quilt top to the batting and backing.

STEP 2: "IN-THE-DITCH" QUILTING

STRAIGHT LINE (OR STARTER) TOOL

- Stitch in the ditch between the first and second rows.
- On the Q 24 continue to quilt in the ditch at the bottom of each row or around blocks BEFORE you quilt the row itself to secure it as you move down the quilt top.
- On the Q 20, or domestic machines, quilt in the ditch between all the rows at the onset of quilting.

STEP 3: PIANO KEYS STRAIGHT LINE (OR STARTER) TOOL



- Quilt up and down the piano keys, moving across the quilt and quilting on top of previous in the ditch stitching. Remember, you can always travel along the edge of your blocks to get from place to place on your quilt top using your Straight Line Tool.

STEP 4: DIAMONDS STRAIGHT LINE (OR STARTER) TOOL



- Starting at the green mark on either end of the quilt top, quilt from green mark to green mark across the top, forming a "zig zag" row of stitching.



- Quilt back across the quilt top connecting the blue marks, making sure to stop and quilt a diamond in the center.

Hint: Marking the center of a border and then working from the edges in, adding an extra motif to compensate in that area is a great way to quilt borders without a lot of math!

STEP 5: TRIANGLES STRAIGHT LINE (OR STARTER) TOOL



- Starting at the aqua mark on either end of the quilt top, quilt from the upper aqua marks to the lower aqua marks across the top, forming large triangles.



- Quilt back across the quilt top connecting those same lower aqua marks with the aqua marks in the middle of the row to form the smaller triangles.

Hint: Dividing spaces with the Straight Line Tool gives you great spaces to fill with free motion for a custom look.

STEP 6: 15-PATCH MINI 4-IN-1 TOOL



- Use the shallow concave curve of the Mini 4-in-1 Tool to quilt between the corners of the aqua blocks.



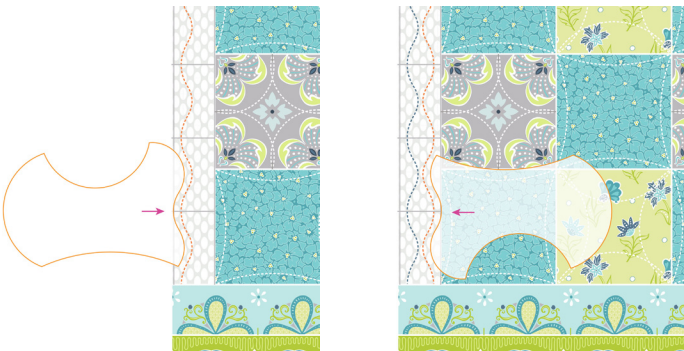
- Use the convex curve of the Mini 4-in-1 Tool to quilt between the corners of the green blocks.



- Use the deep concave curve of the Mini 4-in-1 Tool to quilt between the center side markings of the grey blocks.

STEP 7: SASHING

MINI 4-IN-1 TOOL



- Quilt down one side of the sashing on the left of the 15-patch blocks using the curvy side of the Mini 4-in-1 Tool, aligning the intersections of the grey lines with its inner curve as shown. Quilt up the right side of that sashing in a similar manner.



- Quilt down one side of the sashing on the right of the 15-patch blocks using the curvy side of the Mini 4-in-1 Tool, aligning the intersections of the grey lines and the edge of the 15-patch blocks with its inner curve as shown. (You can hold the tool on the right and use the grey line for alignment if you are left-handed.) Quilt up the sashing, positioning the ruler to offset the first line of quilting.

STEP 8: CLAMSHELLS

2-1/2" CIRCLE



- Starting on the left, use the 2-1/2" Circle Tool to connect the green marks with clamshell shapes. When you get to the last green mark, backtrack along the "in-the-ditch" quilting to the first navy mark and continue across the row.

Hint: Working from the edges in and letting motifs cross in the middle of the border is another way to avoid having to do a lot of marking!

STEP 9: PETALS

3-1/2" CIRCLE



- Use the 3-1/2" Circle Tool to connect the little dots in the middle of the white flowers with wavy lines from left to right.



- Alternate the position of the template from the top to the bottom of the wave shape.



- Travel back from right to left to form petal shapes.

STEP 10: WAVES

3-1/2" CIRCLE



- Use the 3-1/2" Circle Tool to connect the blue marks from left to right.



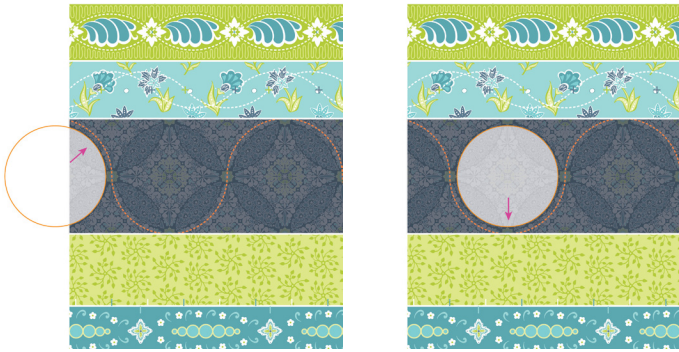
- Alternate the position of the template from the top to the bottom of the wave shape.



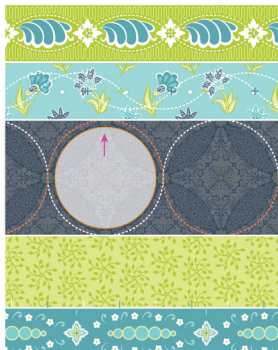
- Travel back from right to left to connect the green marks to form petal shapes.

STEP 11: ORANGE PEELS

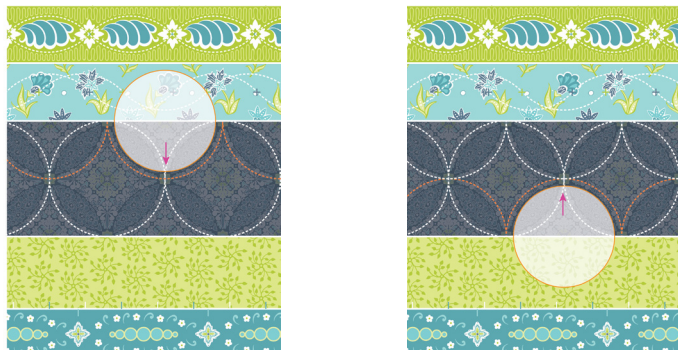
3-1/2" CIRCLE



- Starting at the top left corner of the row, use the 3-1/2" Circle Tool to connect the centers of the flowers in an "S" curve from left to right. Alternate the stitching from top to bottom of the Circle Tool to form a figure-8 shape.



- Travel back from right to left to complete the figure-8 shape.



- Make another pass from left to right to complete the orange peels on the top of the row. Travel back from right to left to complete the orange peels on the bottom of the row.

STEP 12: SCALLOPS

2" X 4" OVAL



- Starting at the left side of the row, use the 2" x 4" Oval Tool oriented vertically to connect the white marks. Align the center of the oval on the bottom of the row. Work back from right to left in a similar manner to connect the aqua marks.

STEP 13: OVALS AND DIAMONDS

2" X 4" OVAL



- Starting at the left side of the row, use the 2" x 4" Oval Tool oriented horizontally to connect aqua marks on the bottom of the row.

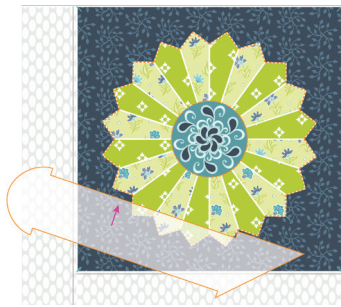


- Align the center of the oval on the bottom of the row. Work back from right to left in a similar manner to connect the aqua marks on the top of the row.

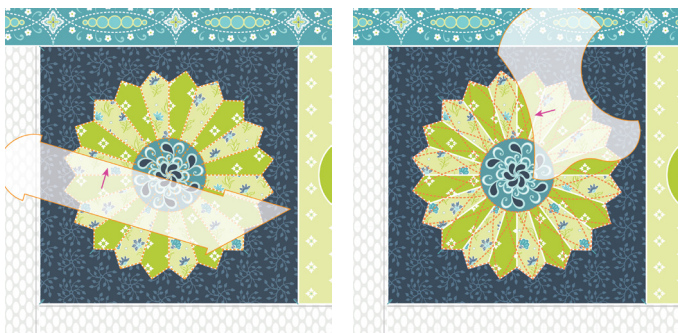
QUILT IN-THE-DITCH AROUND ALL BLOCKS BEFORE CONTINUING ON

STEP 14: DRESDEN PLATE

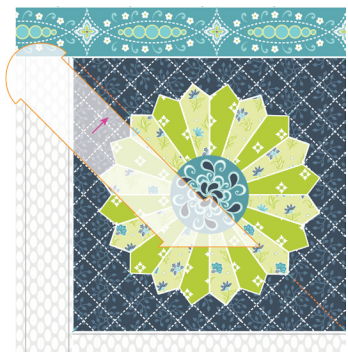
STRAIGHT LINE TOOL AND MINI 4-IN-1 TOOL



- Quilt around the Dresden Plate using the Straight Line Tool.
- Quilt around the center, using either the Mini 4-in-1 or a circle to keep a smooth quilting line.



- Quilt in the ditch around all the plates, using your previously quilted lines to travel between each OR quilt arcs around the plate using the shallow concave curve of the Mini 4-in-1 Tool, traveling over previous stitching.



- Quilt a crosshatch pattern in the background using the Straight Line Tool, starting on the diagonals. Align the markings on the ruler with previous quilting lines to ensure the lines remain parallel and straight.

STEP 15: CIRCLE WREATH

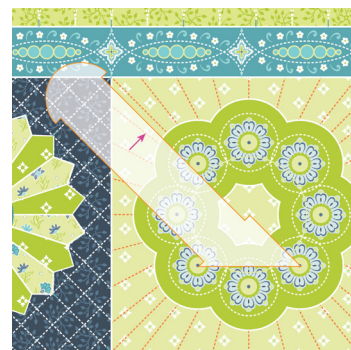
2-1/2" CIRCLE, 1-1/2" CIRCLE



- Quilt around the inner and outer edge of the wreath using the 2-1/2" Circle Tool.



- If desired, quilt around each flower using the 1-1/2" Circle Tool aligning it with the white marks as shown. Quilt over your previous quilting lines to move from circle to circle.

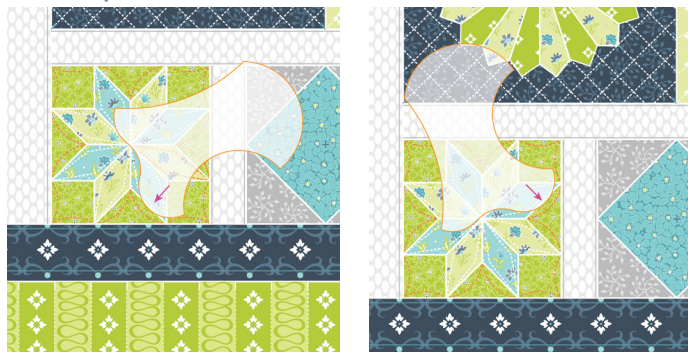


- Quilt rays around the edge of the wreath using the Straight Line Tool aligning it with the flower in the center of the block and various points around the outer edge of the square.

STEP 16: LEMOYNE STAR
STRAIGHT LINE TOOL, MINI 4-IN-1 TOOL



- Using the Straight Line Tool, start at the point of the star and quilt all around the star and between the diamonds that make up the star. Quilt narrower diamonds within the diamond shapes if desired.



- Use the wavy side of the Mini 4-in-1 Tool to "bounce" around the outline of the star and the borders.

STEP 17: DIAMOND IN A SQUARE
STRAIGHT LINE TOOL, MINI 4-IN-1 TOOL, 3-1/2" CIRCLE, 4" X 8" OVAL



- Starting at the corner of a diamond, quilt in the ditch around the diamond using the Straight Line Tool. Then "bounce" around the square using the large convex curve of the 4-in-tool.



- Without ending the thread, "bounce" around the diamond using the 3-1/2" circle OR "bounce" around the diamond using the 4" x 8" oval. Watch the center mark for help aligning the ruler.

STEP 18: CROSSHATCHING
SQUIGGLE TOOL OR STRAIGHT LINE TOOL



- For the Sit-Down kit, using the Squiggle Tool, quilt one direction of a wavy crosshatch.
- For the Frame Kit, using the Straight Line Tool, quilt one direction of a straight crosshatch.



- Rotate the tool and quilt the other direction.

Hint: You can use painter's tape on your ruler to mark it and quilt with uniform spacing.

STEP 19: SASHING

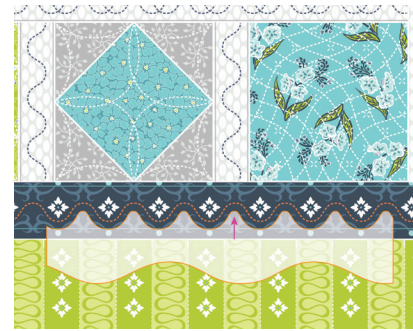
SQUIGGLE TOOL (OPTIONAL IF YOU ONLY HAVE THE BERNINA FRAME RULER KIT)



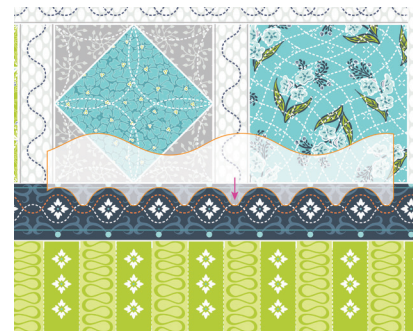
- Orient the Squiggle Tool as shown to quilt all the sashing surrounding the blocks. Note that there are alignment marks on the top and bottom or left and right in the sashing so you can hold the ruler in whatever manner is most comfortable for you.
- If you have the BERNINA Frame Ruler Kit and don't have the Squiggle Tool experiment with the rulers in the set to create alternate sashing designs.

STEP 20: OGEES

SQUIGGLE TOOL (OPTIONAL IF YOU ONLY HAVE THE BERNINA FRAME RULER KIT)



- Using the Squiggle Tool, hold the ruler below the foot and align the dips in the curve with the bottom aqua horizontal line on the fabric to quilt from left to right across the quilt top.



- Quilt back from right to left, holding the ruler above the foot and aligning the dips of the curve with the top aqua horizontal line.
- If you have the Frame Kit, experiment with the circles for a similar effect.

STEP 21: PIANO KEYS

STRAIGHT LINE TOOL (NOT PICTURED)

Repeat Step 3 for a beautiful finish!

